



## THE EGRET VII at SILVERLEAF

THE EGRET VII - COASTAL

QUICK MOVE IN

**4 Bedrooms • 4 Bathrooms • 3-Car Garage • 2,814 ft<sup>2</sup> Living Area • 3,697 ft<sup>2</sup> Under Roof**

The Egret VII is a 2,813-square-foot, four-bedroom, three-bath home designed for both style and functionality. Its expansive living room flows into a deluxe kitchen and cozy breakfast nook, with easy access to a covered lanai perfect for year-round outdoor enjoyment. The private master suite offers dual walk-in closets, a spa-like bath, and an optional soaking tub. A flex room adds versatility for a home office or guest space. With ICI Homes' customization options, personalize every detail to match your lifestyle—from an added garage bay to a summer kitchen, making the Egret VII truly yours.

\* Renderings may vary from actual home. Please see disclaimer for more details.

**\$1,416**

ESTIMATED SAVINGS



This home has a HERS Score of 57 and is estimated to save you \$2,686 on your annual utility bills vs. a resale home.

# THE EGRET VII

4 Bedrooms • 4 Bathrooms • 3-Car Garage

QUICK MOVE IN

## Silverleaf

Regency Series | 70' Wide Lots | Courtney Grove - Lot 102

53 Glenbriar Court  
St Augustine, FL, 32092

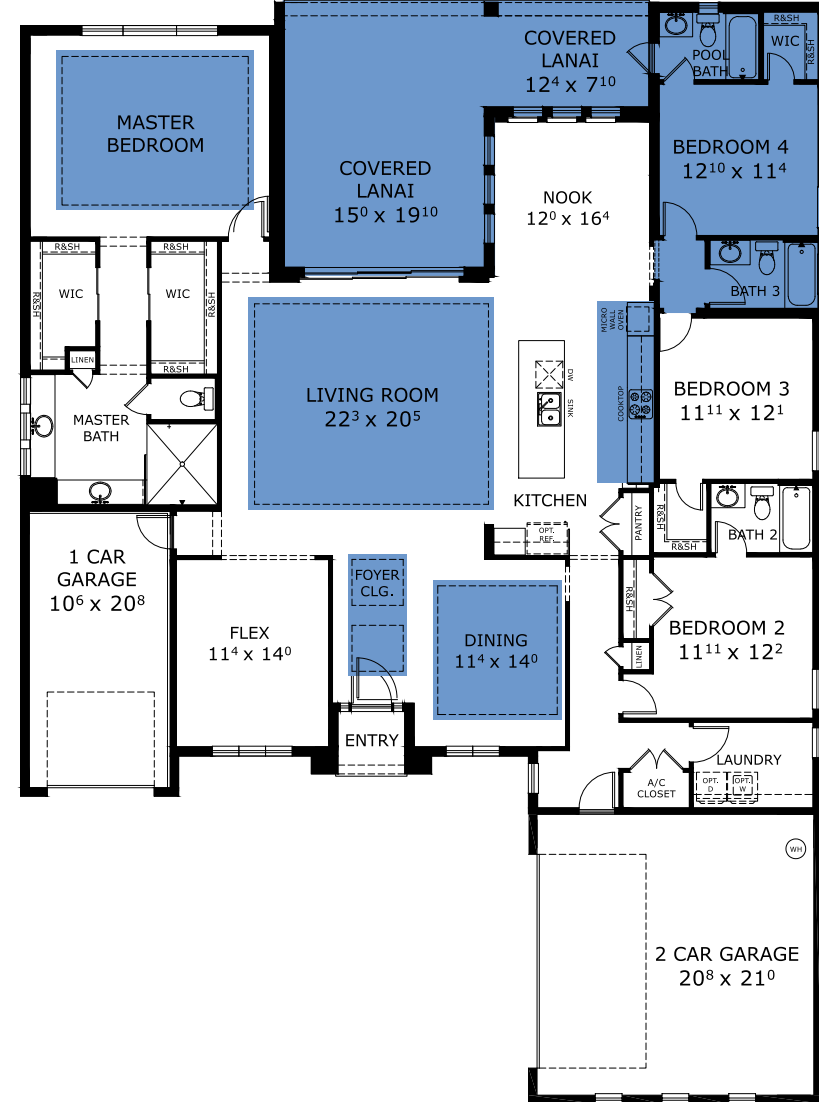
Living Area: 2,814 ft<sup>2</sup>

### Structural Options Included in This Home:

- ✓ Fireplace-Box Mantel 5
- ✓ Pool Bath
- ✓ Kitchen Deluxe - NFD
- ✓ Extended Covered Lanai
- ✓ Tray Ceiling - Dining
- ✓ Tray Ceiling - Foyer
- ✓ Tray Ceiling - Living Room
- ✓ Tray Ceiling - Master Suite
- ✓ Outlet-Floor Plug Brass
- ✓ Pool bath- Shower ILO Tub
- ✓ Bath #2 Shower ILO tub
- ✓ Extend M/Bed rear wall to align with Extended Lanai- See Drawing
- ✓ Deluxe M/ Bath layout ONLY- NO TRAYS and NO TUB just larger shower place toilet against exterior side wall and 1 car garage wall, and shower to be placed along 1 car garage wall, place vanities against
- ✓ Enclose dining room making new pantry 11 x 6 and office towards front of house 11 x 8 with no doors- See Drawing

And much more....

## FIRST FLOOR



Price From: ~~\$999,022~~ Move In! **Speak to a Sales Counselor (844) 349-6401** or visit [ICIHomes.com](https://www.ICIHomes.com)

©1994-2026 ICI Homes™ is a registered trademark whose divisions operate under CBC1267313, CBC1262114, CBC1262120, CBC1264300, CBC1265743, CRC1333091, and CBC1257263. Features may be plan specific and vary. Please consult a Sales Associate for specific feature information. All new ICI Homes come with a HBW 2-10 warranty. Certain elevations may have additional fees. Prices may not include lot premiums, upgrades, and options. Inventory home completion date may vary. All prices subject to change without notice. All plans are property of ICI Homes and cannot be copied or used without permission. Prices, promotions, incentives, features, options, amenities, floor plans, elevations, site maps, designs, materials, and dimensions are for illustrative purposes only and subject to change without notice. Plans should not be relied upon as representation express or implied of final sizes, locations, features or dimensions. Square footage and dimensions are estimated and may vary from description. All HERS ratings and savings are calculated by a third party energy rating service. Actual savings will depend on a number of factors, including but not limited to daily activities, home maintenance practices, household size, use of appliances, lighting and internal climate control systems, lot orientation, and surrounding climate and weather conditions. Created on 06/25/2026: \_\_\_\_\_ Garage Orientation R / L: \_\_\_\_\_

